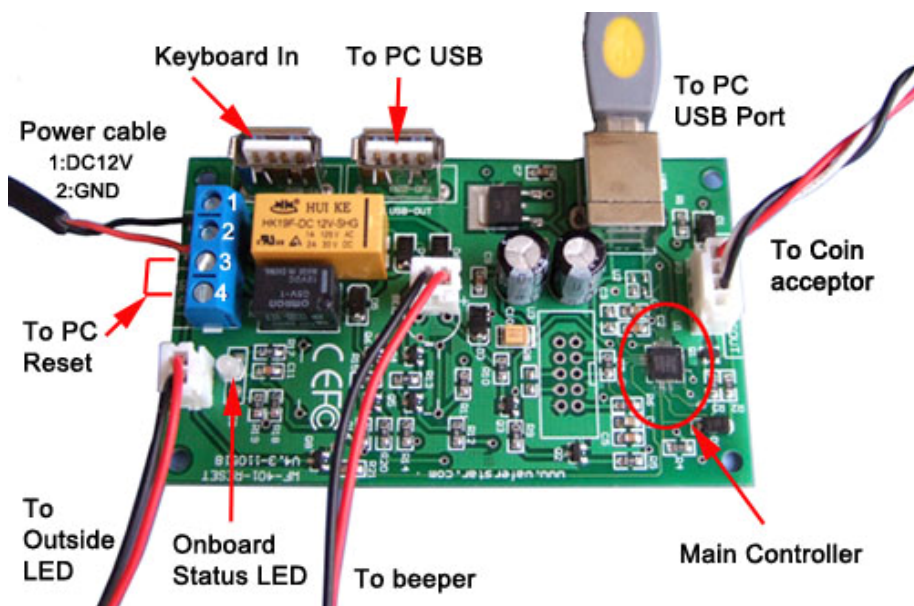


## WF-4011 OPERATION INTRODUCTION

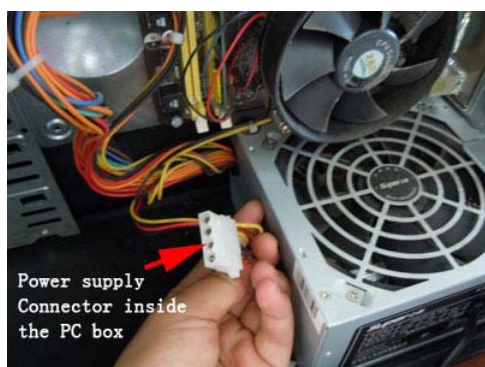
### 1. System introduction:

WF-4011 is developed by Wafer Company for the kiosk computer system. Computer kiosk system is protected by the management software, and also protect from the hardware by reset wire.

### 2. WF-4011 Hardware Instruction:



(1) Power Supply : DC12V, Normally we can use the power supply from the computer power supply. Power supply cable is optional parts, before order, please confirm that with wafer company.





If your computer inside power cable only has the SATA power cable. You can contact wafer before order to use the SATA power cable or you can buy the Converter adapter to convert the SATA power cable to IDE power connector.

- (2) WF-4011 USB adapter, that is used to connect the coin acceptor to computer.
- (3) Reset wire is used to connect to the PC restart button, when the system is problem or hacked by other, then will restart the system to protect the system.
- (4) On Board Status LED and beeper is used to show the computer and system software status. When 4011 is losing the connection to PC, then the status LED will start to flash.
- (5) Connector to coin acceptor, that is used to connect the control board to coin acceptor.
 

Red	----	RED	(Red wire connect to red wire)
White	----	White	(White wire connect to white wire)
Black	----	Black	(Black wire connect to black wire)

**(Normally wafer will provide the standard cable accessories, that is used to connect the WF-4011 Board to coin acceptor)**

- (6) Keyboard In and Out to PC USB port. That is used to connect the USB keyboard and also has an USB cable output to PC. Then the USB keyboard is under control by the WF-4011 Board. REM: Coin pulse that is used to connect to the output of the pulse type coin acceptor. Normally, we use the NPN Open-C type coin acceptor output, and you also need to switch the coin acceptor to "NC" (Normally closed) output type.
- (7) Connector to Beeper: that is used to connect the alarm beeper to WF-4011 board.

### 3. Execute CoinBox.exe to install application:

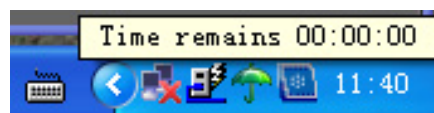
During the installation, that would need to check your file package, that would include two files: setup.exe and also has a **Panel.key**, that is used to run your software.

After installation, **you need to copy the Panel.key file to your installation file package**, and then run the file: **Panel.exe** for the first time.

Also wafer maybe provide you a software package with the Panel.key file, then you only need to simply copy those files to a suitable directory you want to run the software (Normally this directory and file package would be protected by system protect software or hardware)

### 4. Run the software files

Double click CoinBox icon to startup application program of "Coin box manager", in system tray it shows the icon of application program "Coin box manager". When mouse pointer on the icon in system tray, it will display remain time, as following picture:

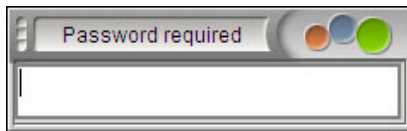


The first time ,you need to run the software manual, later when system startup,then the software will run automatically

## 5. Start the coin box manager

Please start the "Coin box manager" in 2 minutes after "Coin box manager" start to run, otherwise "Coin box manager" would lock computer after 2 minutes, until there are coins dropped correctly.

## 6. Input the password

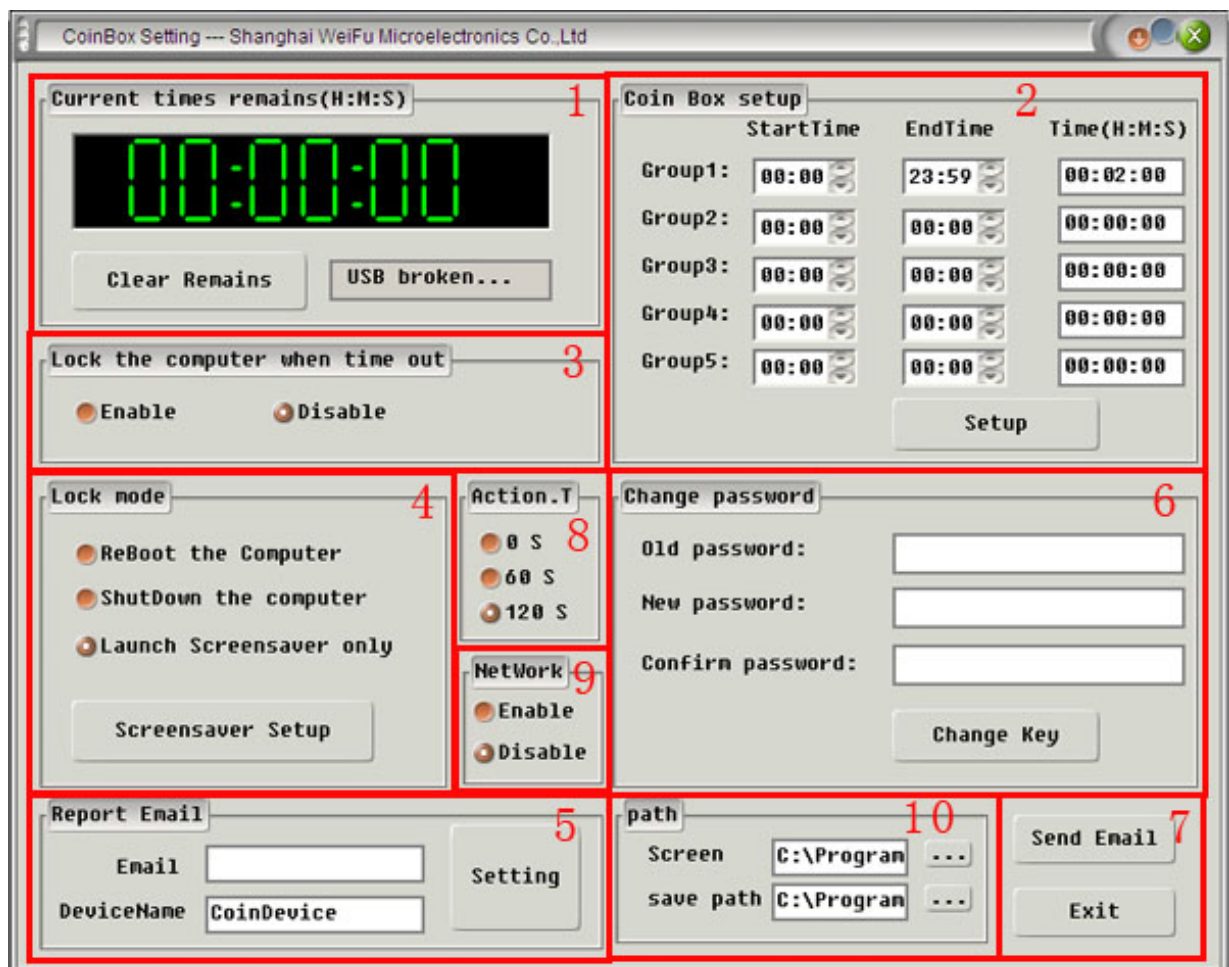


Click "Coin box manager" icon in system tray, input password to enter into configuration window (as default password of program is "555"), password has to be inputted in 10 seconds, otherwise the "password required" window will close

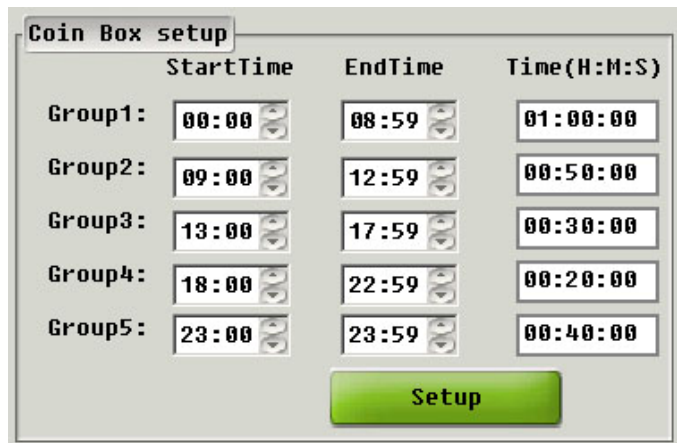
automatically after 10 seconds.

## 7. Configuration window description:

In the configuration window, it can be divided into 10 function areas



- 1) This is the internal timer LED window , from this window ,you can see the remains timers and the USB adapter status: Connected or broken . Also you can use the "Clear Remains" Button to clear the remain timer.
- 2) This area is used to setup the timer credit during a day,you can setup different ratio.

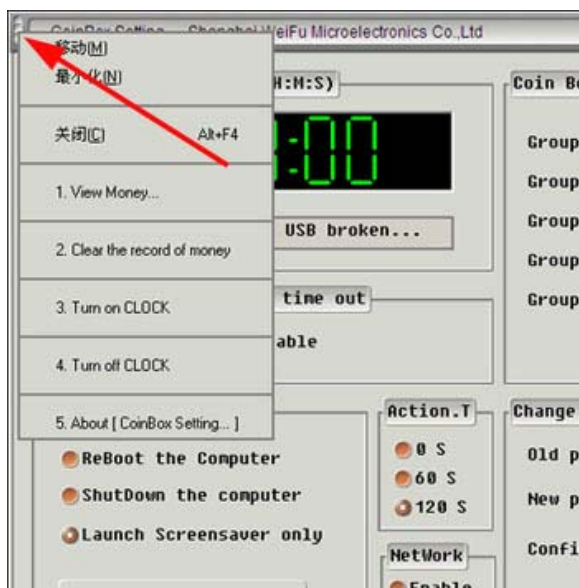


**Ratio setup:**

1. Manager Can setup 5 different credit ratio in a day..
  2. Time is the timer you can use the PC per coin credit
  3. Timer span From Group1 to Group5, total is 24Hours
- EndTime must be bigger than the StartTime

- 3) This is used to select when the timer out, the PC is in simulating mode or normal working mode. If select enable box, then when timer is out, the PC would be locked.
- 4) This area is used to select the Lock mode  
When timer is out, you can : Restart the PC or Shut down the PC or Launch the screen saver  
Also here, you need to select the screen saver you want to launch when timer is out
- 5) This area is used to setup the mailbox that would be used to receive your daily income report. Also you can setup the different device name for your different computer in different place. Then the mail sent to you will come together with this device name.
- 6) This area is used to setup or change the management password
- 7) Function button: Email Test and Exit  
When you after setting your Data report email box, you can click the Send Email Button to test if that your mailbox can receive the report email successfully  
Exit button is used to exit this configuration window.
- 8) Action T: this is used to setup the action timer when the first time PC startup. if you select the 0, then the PC will be locked immediately after CoinBox software is running
- 9) This is used to setup if you need to lock the internet after the timer is out.
- 10) Path area is used to setup the direction you want temporary save the data you need to report.

**8. Tools window:**



When mouse move to the left corner of the Configuration window, then left click the mouse, and the tools config window will pop up.

- 1) View Money
- 2) Clear the record of money
- 3) Turn on Clock: Turn on the Time Clock window
- 4) Turn off Clock: Turn off the Time Clock window
- 5) About Coin box

**Real Time clock window:**



From the config tools window, you can “Open the history income file”, “Clear the income record”, “Trun on the Desktop clock ” and “trun off the desktop clock”. Also you can visit the about us, information.

## 9. Timer remains warning



When “Lock the computer when time out” selects option “Enable”, and “Configuration” window is not opened, when remains time is counted down to 60 seconds it displays count-down window until computer is locked. It’s shown as below picture:

## 10. Beeper tone warning

When remains time is less than 10 seconds, “Coin box manager” it will prompt with “DI~” tone, when there are coins dropped correctly “Coin box manager” will give this tone either.

## 11. Data log and report files

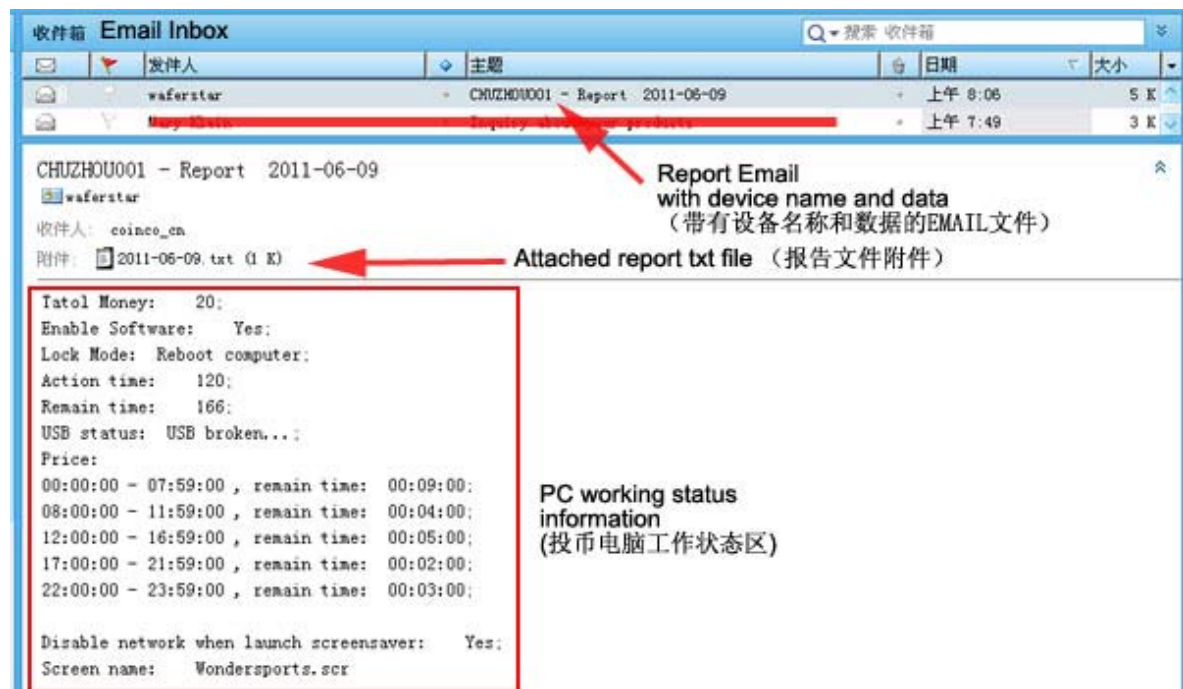
User can get depositing coins’ statistic/detailed file in Installation program file (such as C:\Program Files\CoinBox\ 2011-06-01.TXT). You can delete this file but don’t try to change it, so as to avoid any statistic error. File form/content is as below:

Every day when the computer is running in the first time,the computer will report the system information status data with this income file to your specified email address.

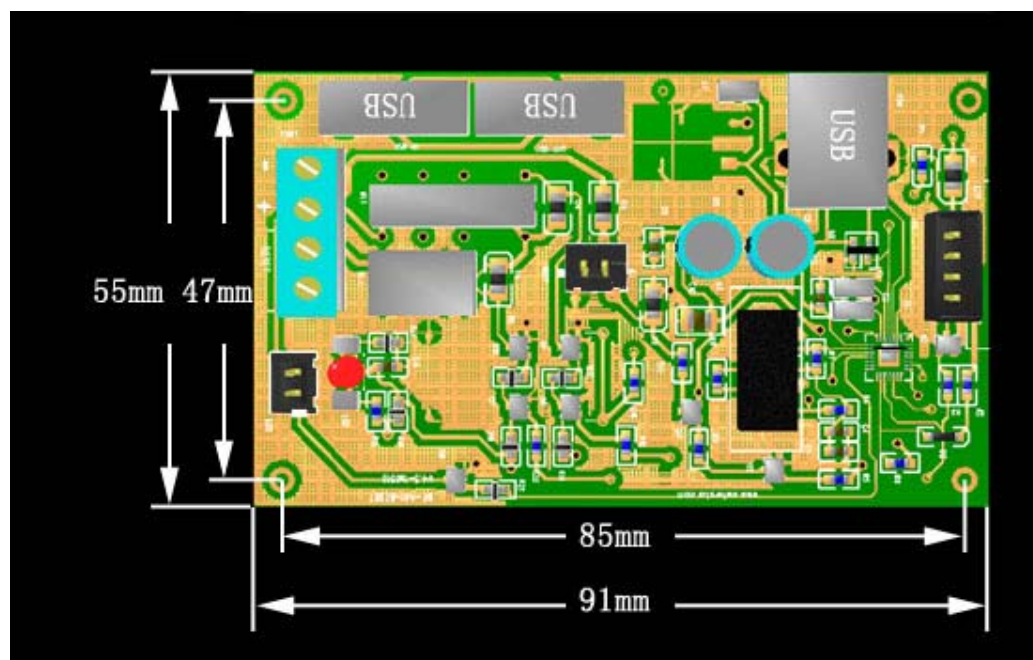
### Data Record file image:



## Email file image:



12. When remains time is 0 it locks computer until receives coins deposited correctly.
13. Board mounting dimension



14. WF-401 Control box for vending computer



**Front side**



**Back side**



**Inside pictures**

**Installation of WF-401 Box:**

- 1、 Connect the USB cable to PC
- 2、 Power cable to PC inside power connector
- 3、 Double USB connector for USB keyboard in and USB keyboard out
- 4、 Run the software of WF-4011

For detail specification ,please check the previous manual of the WF-4011 board

**Shanghai Wafer Microelectronics Co.,Ltd.**

Zip: 200127

TEL: 021—68458945

FAX: 021—39650007

Address: 23E, LiangFeng Building, NO.8, DongFang Road, Shanghai,China

Email: [coinco\\_cn@yahoo.com.cn](mailto:coinco_cn@yahoo.com.cn)

Web: [www.waferstar.com](http://www.waferstar.com)

**(End)**